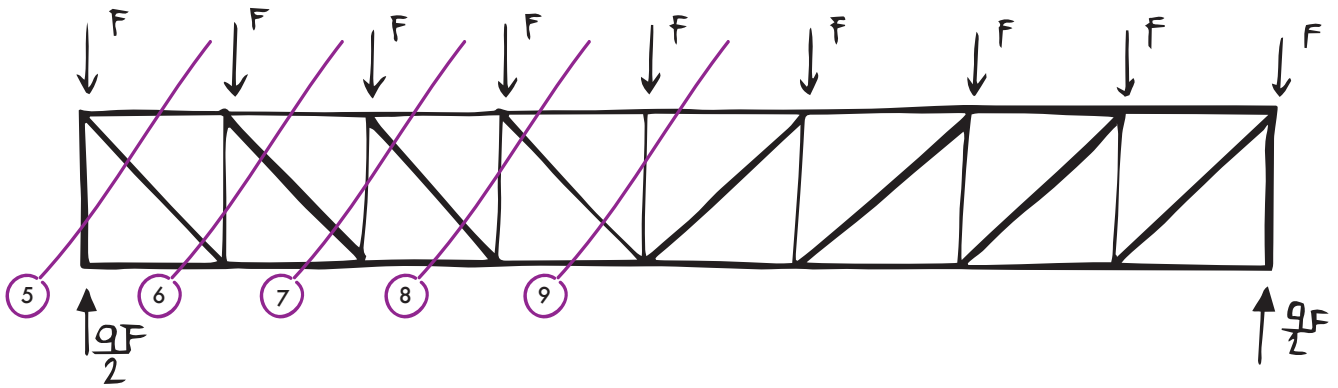
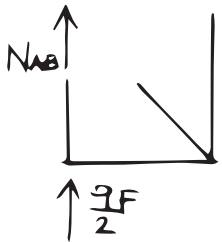


Dopo aver calcolato gli sforzi normali sulle aste diagonali e sui correnti, rimangono da considerare i montanti verticali:

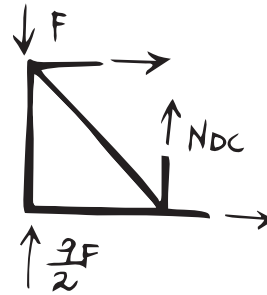


**SEZIONE #5**



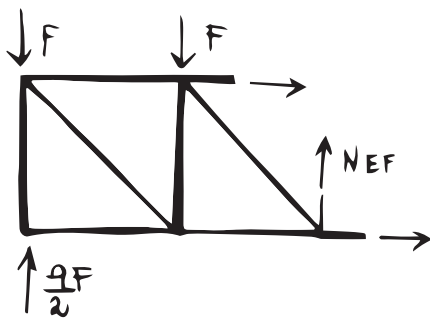
$$\textcircled{1} N_{AB} + \frac{9F}{2} = 0 \quad N_{AB} = -\frac{9F}{2}$$

**SEZIONE #6**



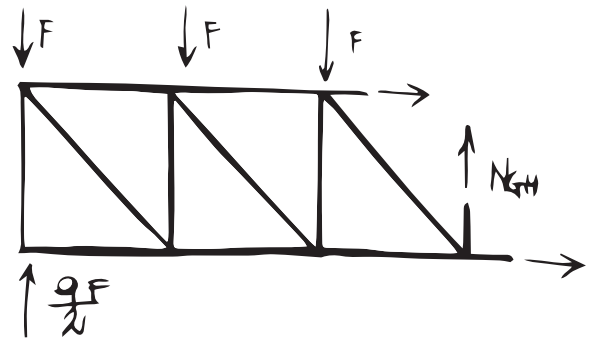
$$\textcircled{1} N_{DC} + \frac{9F}{2} - F = 0 \quad N_{DC} = -\frac{7F}{2}$$

**SEZIONE #7**



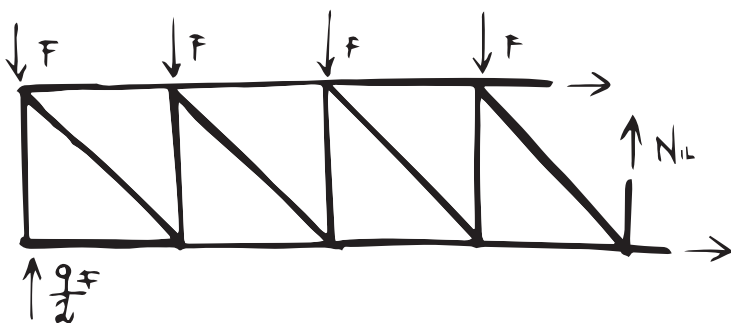
$$\textcircled{1} N_{EF} + \frac{9F}{2} - 2F = 0 \quad N_{EF} = -\frac{5F}{2}$$

**SEZIONE #8**



$$\textcircled{1} N_{GH} + \frac{9F}{2} - 3F = 0 \quad N_{GH} = -\frac{3F}{2}$$

**SEZIONE #9**



$$\textcircled{1} N_{IL} + \frac{9F}{2} - 4F = 0 \quad N_{IL} = -\frac{F}{2}$$